



Electromagnetic



- Perfect heat & pressure distribution single electromagnetic plate of 40x50 cm

- Manual drawer on Clam Pro
- Membrane plate on Clam Air Pro

User friendly :

- * Complete clearance of the plate
- * Automatic opening by electromagnet
- * Reversible C-shaped part & Quick Release
- Robust frame
- Suitable for laser transfer applications & sublimation on textile and rigid materials
- Ideal for small to medium productions
- Manufactured in France
- 2-year guarantee on the machine
- 10-year guarantee on heating element



Set programs



QuickRelease® system



GPX 3200W (Pro GPX version)



Pre-heat time

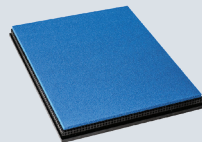


Membrane (Air Pro version)

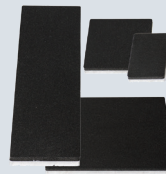
OPTIONAL ACCESSORIES



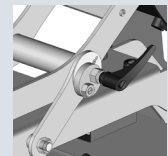
Support table



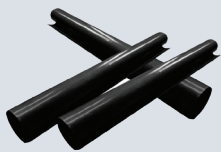
DTG plate



Set of 4 plates



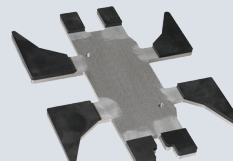
Pressure selector



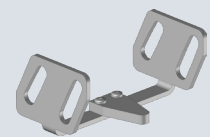
Teflon Sheet



Nomex® cover



Shoe plate



Drying tool

Email

sales@sefa.fr
support@sefa.fr
www.sefa.fr

Phone

Office : + 33 4 68 74 05 89
Fax : + 33 4 68 74 24 08

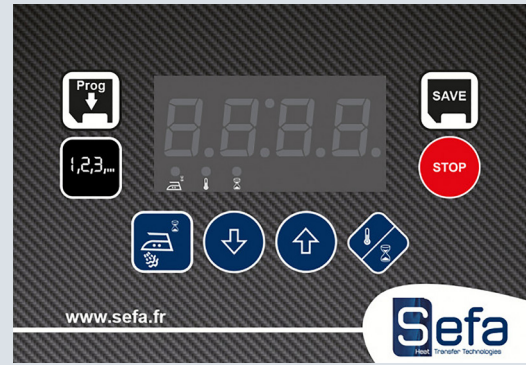
Address

SEFA SAS
Z.I. PASTABRAC
11 260 ESPERAZA (FR)

TECHNICAL CHARACTERISTICS

Type Operation	Electromagnetic Slide - Tray with drawer, Clam - Clamshell opening
Platen size	40x50 cm / 16x20 "
Max thickness	15 mm
Weight	58 Kg / 128 lbs
Pressure	330 gr/cm ²
°C / °F Max	220 °C / 429 °F
Power	2500 W (Pro / Air Pro) 3200 W (Pro GPX)
Power supply	240 V Single-phase
Amperage	11 A (Pro / Air Pro) 14 A (Pro GPX)
Applications	Flex, Direct to Garment, Pretreatment, Sublimation Rigid Substrate, Textile Sublimation, Laser Transfer, Screen Printing
Dimension	969x990x453 mm 38x39x18 "

SETTINGS



Electronics developed by Sefa

Accurate and fast regulation (PID control) for a wide range of heat transfer products : Flex, flock, sublimation, screen printing transfer.

Double timer (main + pre-heat)
2 cycle counters
3 settable programs
Stop cycle function

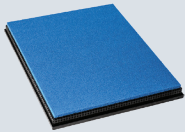
From 0 to 570 sec (precision +/- 1%).
From 0 to 220°C (precision +/- 1%).

Heating time to reach 180°C : 15 min.

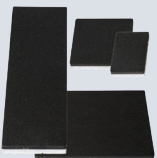
OPTIONAL ACCESSORIES



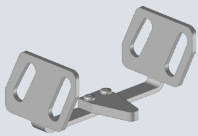
TAB-98 LITE
Support table.



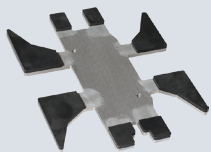
PLA-DRY M
Sponge plate to dry pretreated clothes.



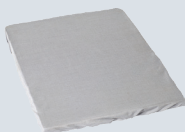
PLA-SET
Set of 4 plates
12 x 8 cm, 15 x 15 cm,
12 x 45 cm, 25 x 30 cm.



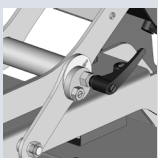
OPT-DRY
Accessory to get a small space between plates for drying ink (no contact).



PLA-SHOES-CV
Special plate that fits textile and sport shoes (side and back).



HOU-50
Heat resistant Nomex® cover for easier threading and protection.



OPT-2POS-CLAMPRO
Option to quickly change pressure from low to high (must be purchased simultaneously with the press).



180° reversible
C-shaped lower
part with Quick
Release system

DIMENSIONS



Box weight CAI-100 : 25 kg